

**Thurrock Local Plan Taskforce**

# **Thurrock Green & Blue Infrastructure Strategy**

Page 1

Prepared by LUC  
Doug McNab  
26 July 2022

# Introduction – what is green infrastructure and why is it important?

- Green infrastructure is *“A network of multi-functional green and blue spaces and other natural features, urban and rural, which is capable of delivering a wide range of environmental, economic, health and wellbeing benefits for nature, climate, local and wider communities and prosperity.”*
- Now widely accepted that GBI is critical to support sustainable growth and wider LA objectives such as health & wellbeing, whilst also helping to address the climate and biodiversity crises
- New development has the potential to put pressure on existing GBI but also provides opportunities to enhance existing GBI and deliver new GBI
- Developing a GBI Strategy is therefore important to direct GBI investment to where it can achieve the most benefits for Thurrock

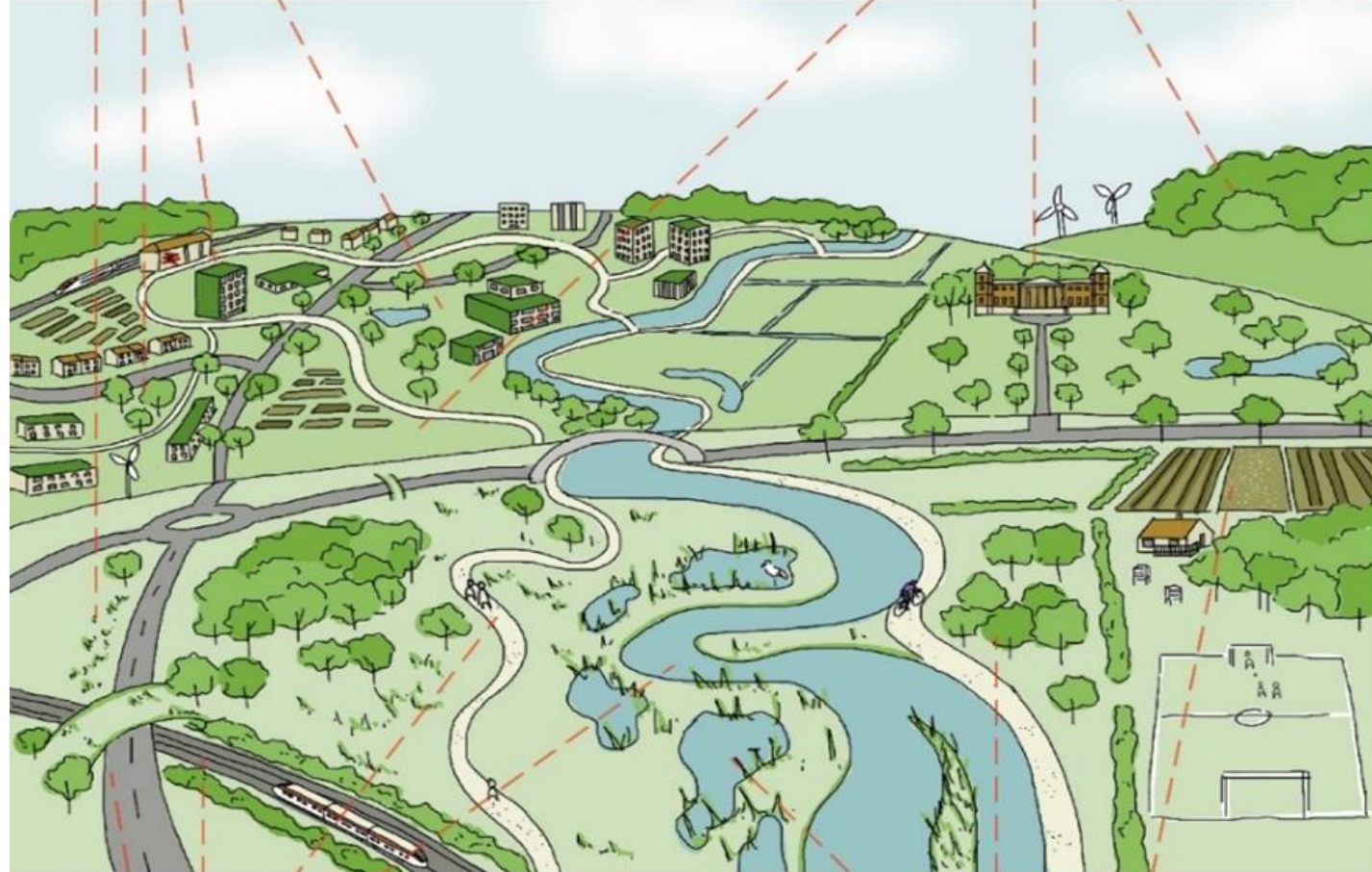
# Components of GBI

## Elements of the built environment

- Verges
- Street trees
- Private gardens
- Amenity space and pocket parks
- Green / brown roofs and green walls
- Bird/ bat boxes

## Managed and natural green spaces

- Public parks
- Formal and informal open space
- Allotments
- Publicly accessible nature conservation sites



## Linear linkages

- Footpaths, greenways and bridleways
- Cycle paths and cycle lanes within roads
- Disused railway lines
- Towing paths
- Waterways and river corridors

## Aspects of the wider landscape & countryside

- Farmland
- Wetlands / floodplains
- Wildlife habitat

# Introduction – what are we doing

- What we're doing and why
- The draft GBI Strategy and changes since
- GBI in planning policy
- Next steps

Page 4

## Local Plan Issues & Options (2019)

- Draft Thurrock GBI Strategy (2019; unpublished)
- South Essex GBI Strategy (2020)
- Essex GI Strategy (2020)

## Draft Local Plan

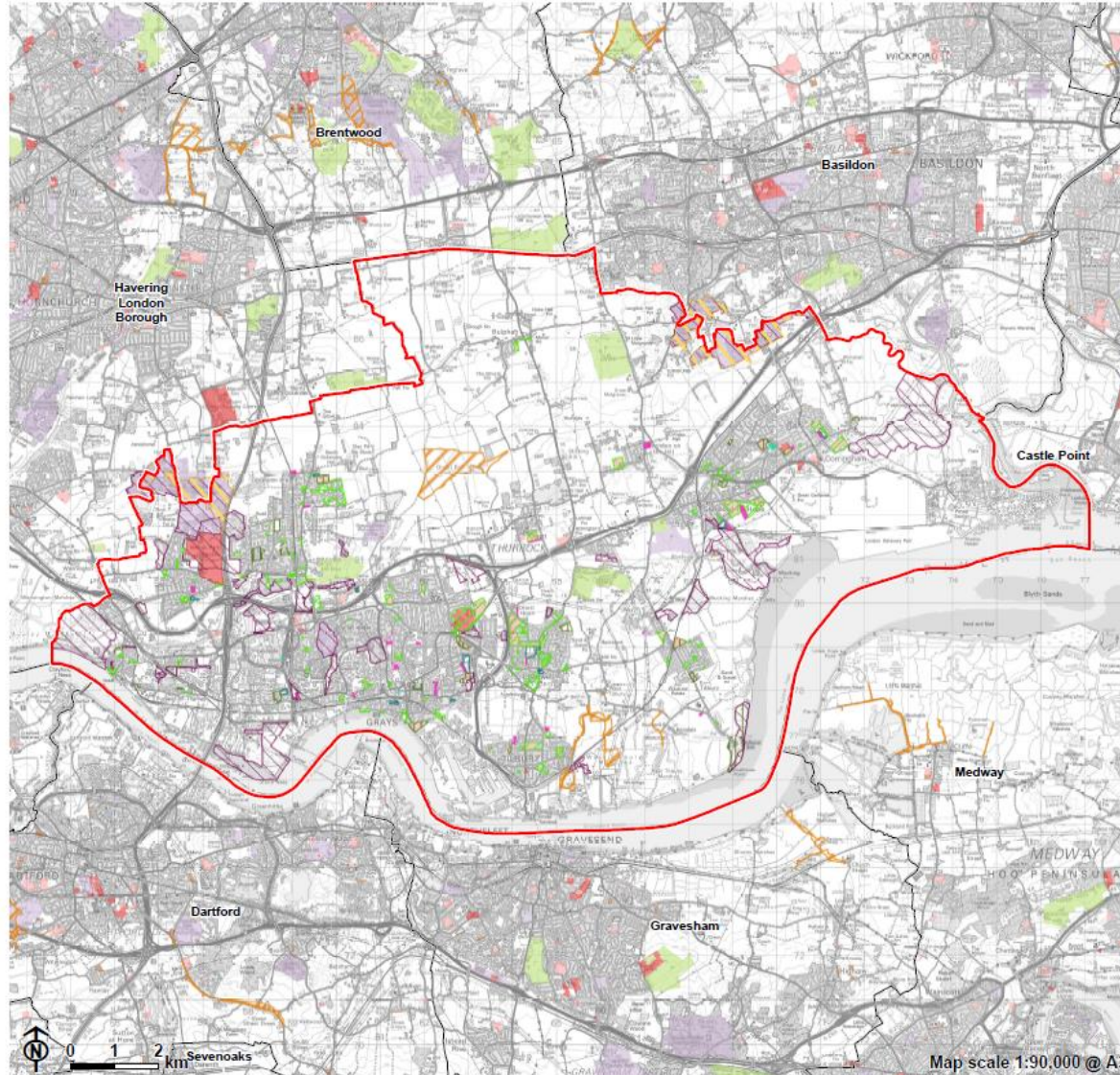
- Updated GBI baseline
- Overarching GBI policies

## Submission Local Plan

- Updated GBI proposals
- Refine policies



# The GBI baseline



Thurrock Green and Blue Infrastructure Study update  
Thurrock Council



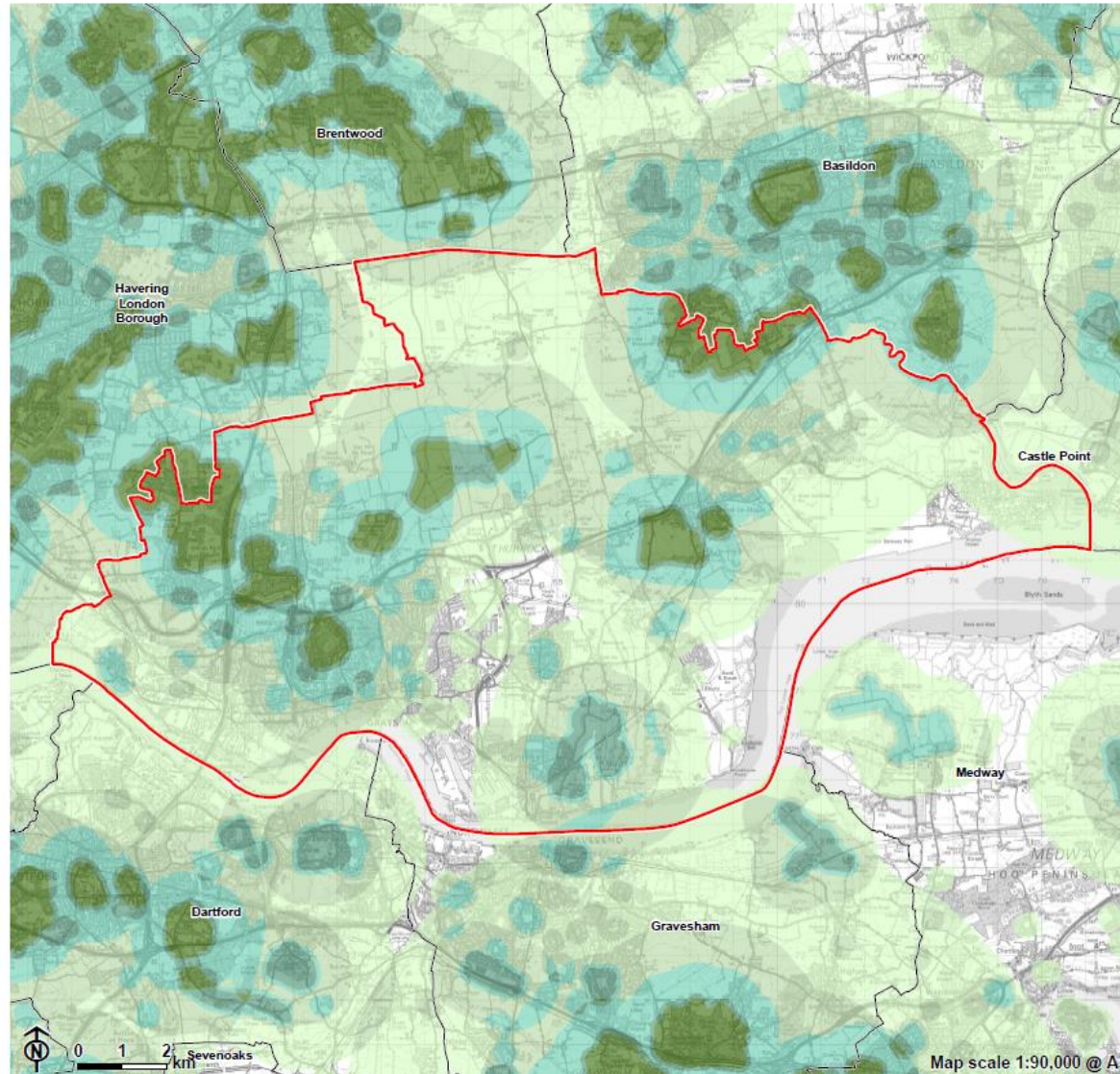
Figure 4.7: Designated Open Space

- Thurrock Council boundary
  - Neighbouring authority boundary
  - Registered Common Land
  - Country park
  - Amenity green space\*
  - Semi natural greenspace\*
  - Parks and gardens
  - Civic space\*
  - Allotment
  - Cemetery\*
- Green and Blue Infrastructure Assets**
- Activity Spaces Provision
  - Allotments and Community Growing Spaces
  - Golf Course
  - Sports Facilities
  - Play Space Provision
  - Playing Fields
  - Public Park - General

Notes:  
\*Indicative Data - Data from previous Thurrock project in 2016



# The GBI baseline



Thurrock Green and Blue Infrastructure  
Study update  
Thurrock Council

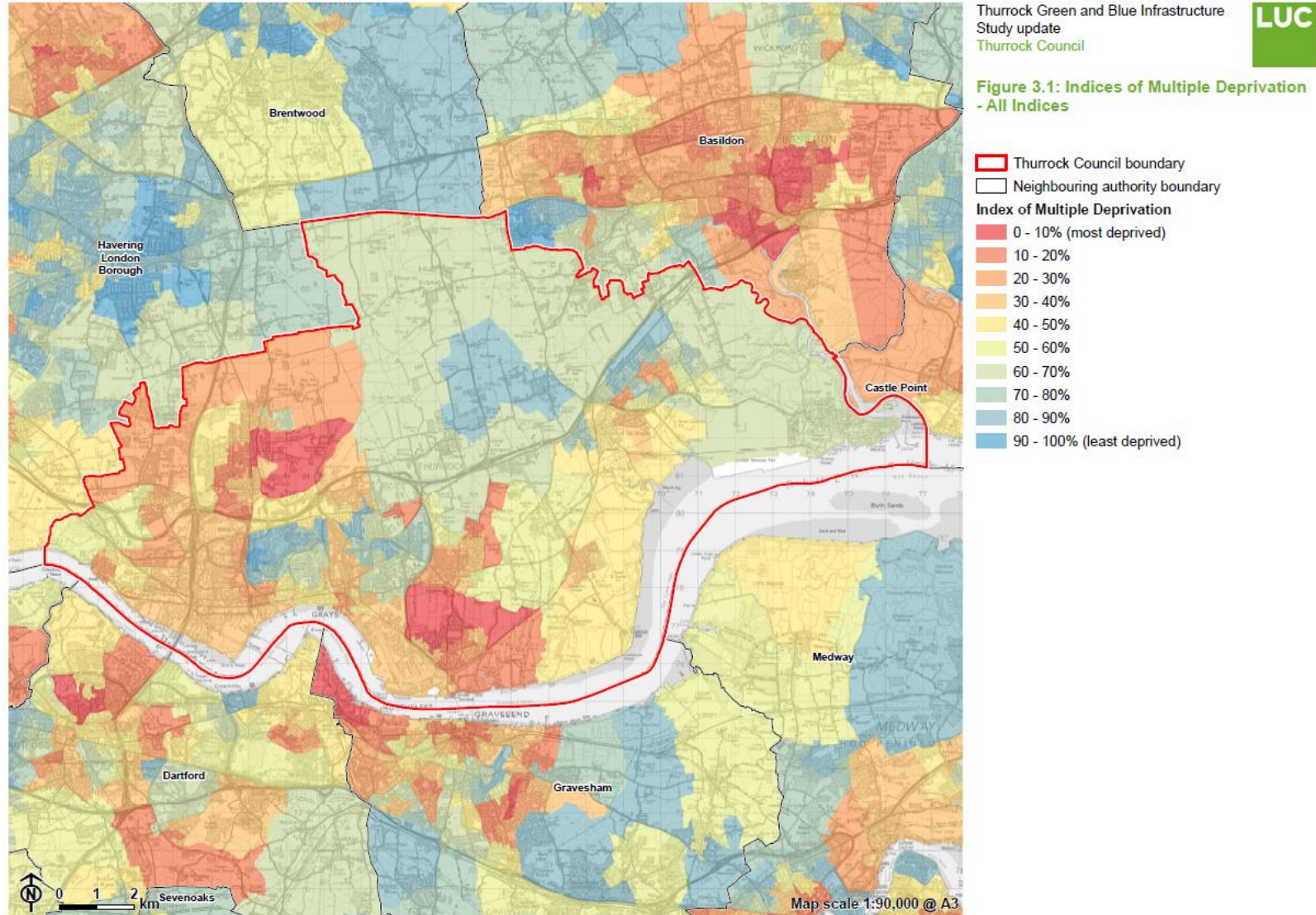


Figure 4.8: Access to Open Space

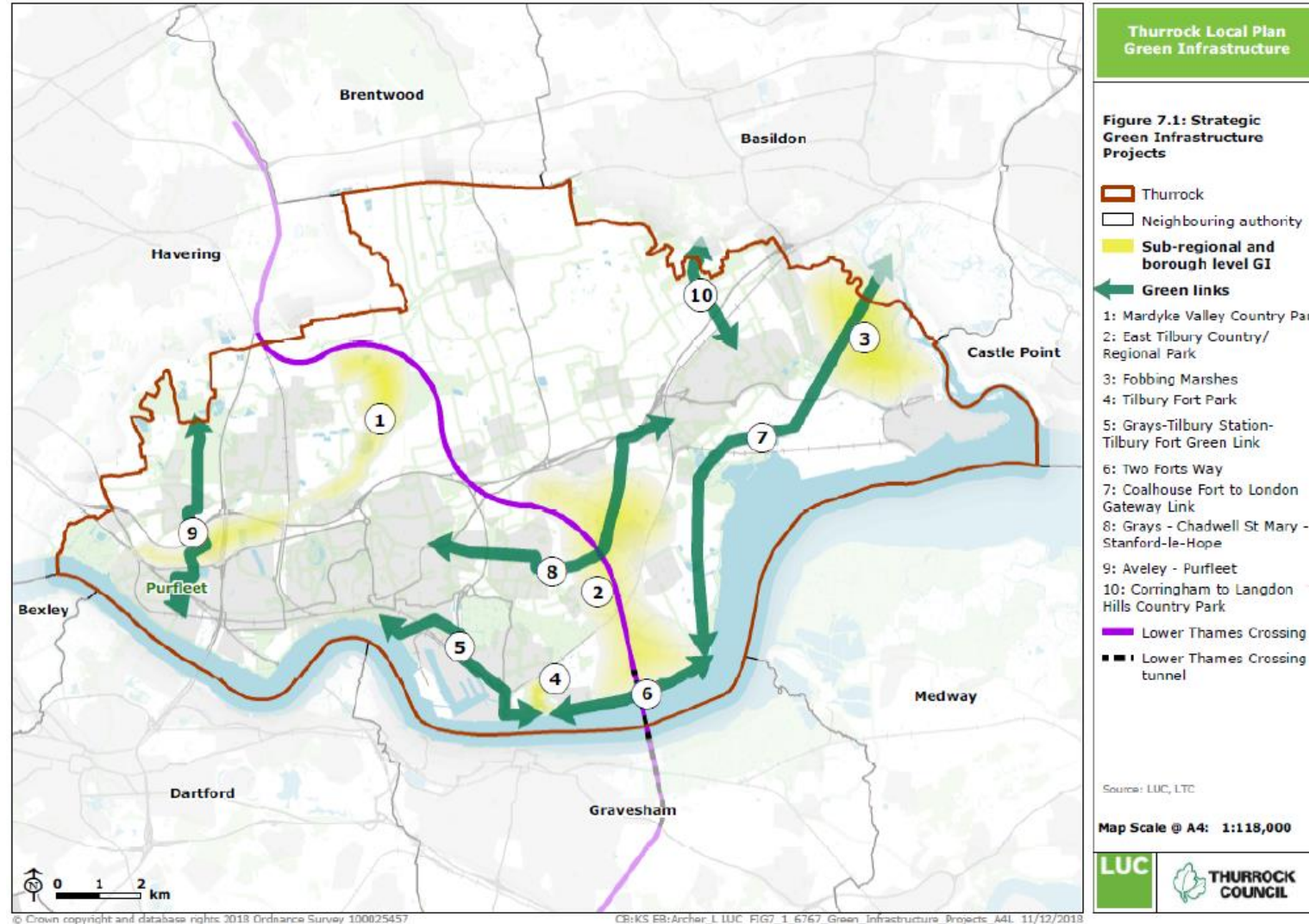
- Thurrock Council boundary
  - Neighbouring authority boundary
- Accessible Natural Greenspace**  
**ANGSt Profile**
- Meets 1 ANGSt standard
  - Meets 2 ANGSt standards
  - Meets 3 ANGSt standards
  - Meets 4 ANGSt standards
  - Meets 5 ANGSt standards
  - Meets 6 ANGSt standards



# The GBI baseline

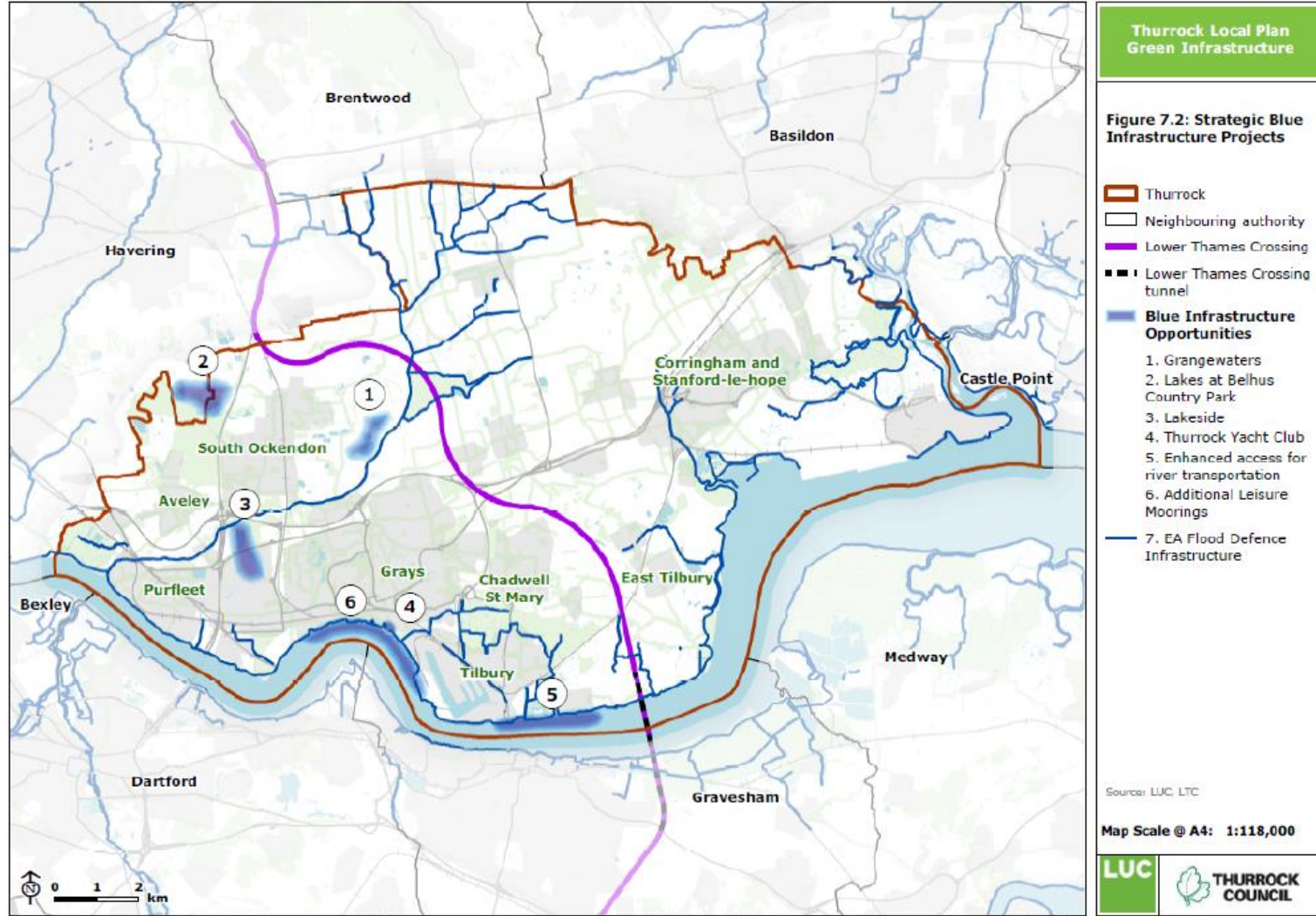


# GBI proposals in 2019





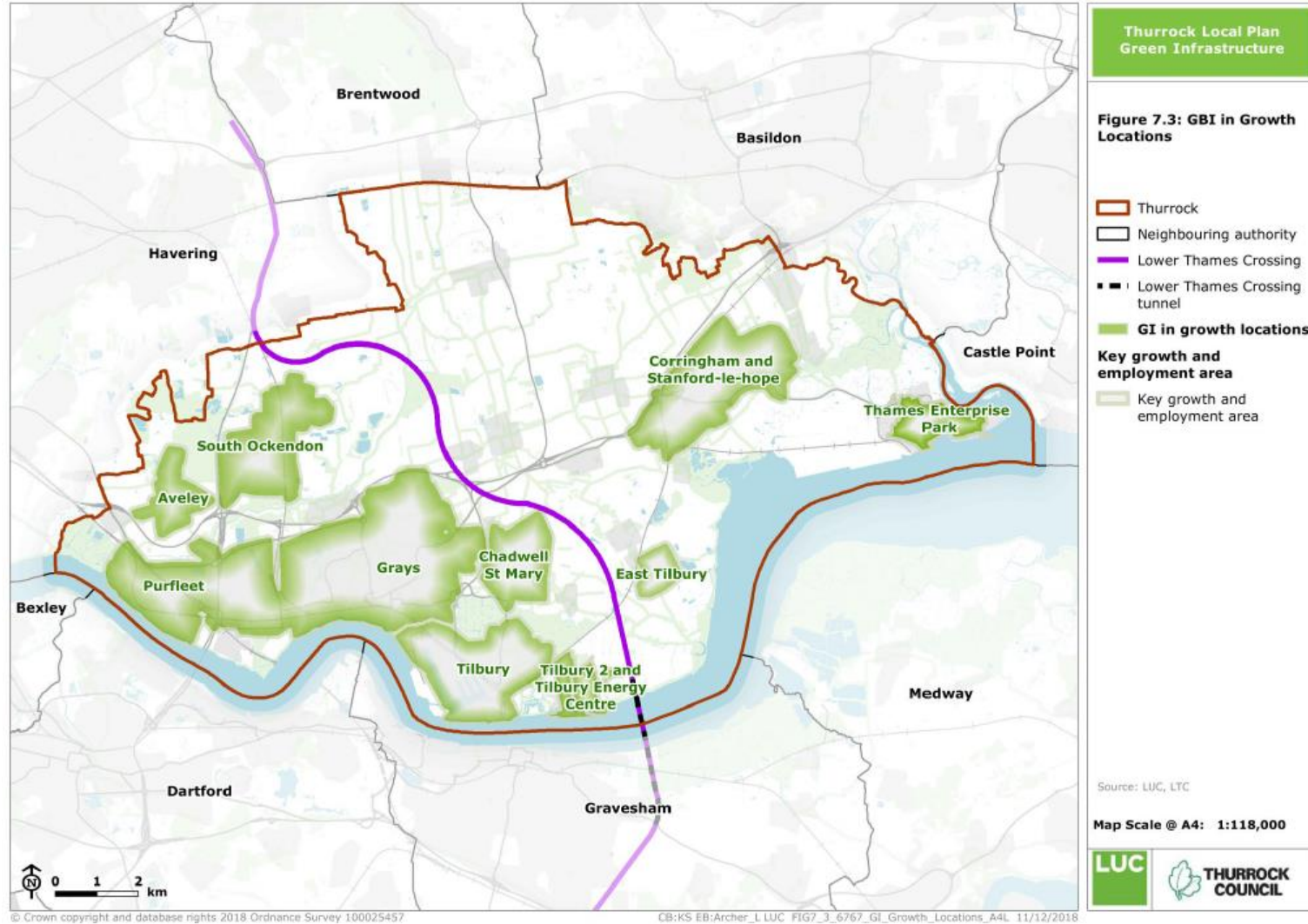
# GBI proposals in 2019



© Crown copyright and database rights 2018 Ordnance Survey 100025457

CB:KS EB:Archer\_L LUC FIG7\_2\_6767\_Blue\_Infrastructure\_Projects\_A4L 11/12/2018

# GBI proposals in 2019



## GBI in planning

- 'Mainstreaming' GBI – benefits across policy areas e.g. high quality design, sustainable travel, water management, biodiversity, access to open space
- Design guidance and codes – masterplanning development sites
- Funding GBI – securing developer contributions and external funding
- Longer term maintenance and governance



## GBI in planning – next steps

Page 12

- Stakeholder consultation on GBI strategy and proposed projects
- Align with emerging Local Plan process and other evidence base studies
- Revisit GBI proposals / identify revised priorities for strategic projects
- Make more detailed recommendations, including for:
  - Policy (strategic and site specific for growth locations)
  - Funding (both developer contributions and wider sources)
  - Implementation/governance (including ongoing management/maintenance)

**Thurrock Local Plan Taskforce**

**Thank you!**

**Any questions?**

**Doug McNab**

**Associate Director, Planning**

**Doug.McNab@landuse.co.uk**

Page 13



This page is intentionally left blank